

# ParaBar Estates



## Salesbury Drive, Billericay

Asking Price £240,000

- TWO BEDROOM APARTMENT
- GROUND FLOOR FLAT
- NO GROUND RENT
- NO ONWARD CHAIN
- LARGE LOUNGE DINER
- COMMUNAL GARDENS
- DOUBLE GLAZED
- MODERN KITCHEN
- TWO PARKING SPACES
- SHORT WALK TO LOCAL SHOPS AND SCHOOLS

106 High Street, Billericay, Essex, CM12 9BY  
01277 65 65 63

[info@parabar.co.uk](mailto:info@parabar.co.uk)  
[www.parabar.co.uk](http://www.parabar.co.uk)



# Salesbury Drive, Billericay

\* TWO BEDROOMS \* GROUND FLOOR FLAT \* MODERN KITCHEN \* LARGE LOUNGE \* MODERN BATHROOM \* TWO ALLOCATED PARKING SPACES \* Lovely two bedroom ground floor flat located in a Cul De Sac which has been kept in excellent condition by the owner. There is two double bedrooms , great size lounge diner and a modern kitchen and bathroom, This flat also has NO ONWARD CHAIN.



Council Tax Band: B



**ENTRANCE HALL**

**LOUNGE**

18'1 x 11'10

**KITCHEN**

7'10 x 8'8

**BEDROOM ONE**

14 x 9

**BEDROOM TWO**

10'5 x 6'10

**BATHROOM**

8 x 6

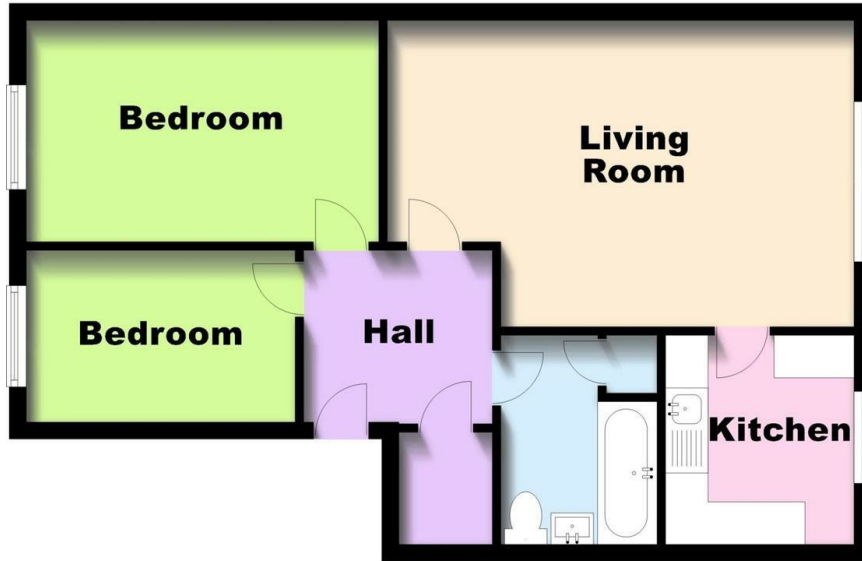
**EXTERIOR**

**CAR PARK**



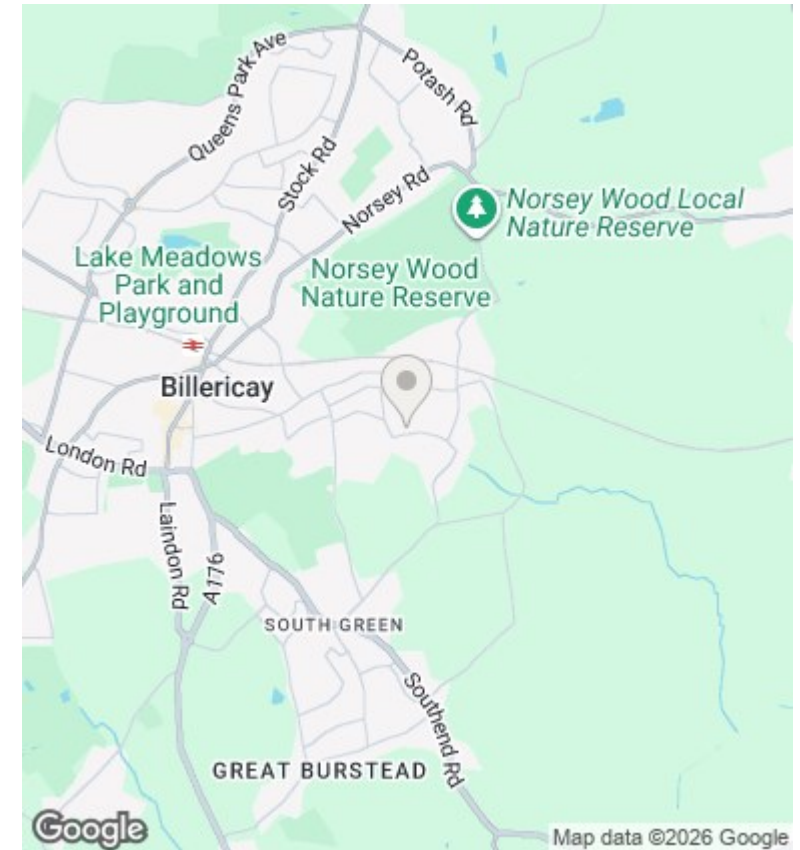


**Ground Floor Flat**  
 Approx. 53.7 sq. metres (578.3 sq. feet)



**Total area: approx. 53.7 sq. metres (578.3 sq. feet)**

Whilst every attempt has been made to ensure the accuracy of the floor plan, measurement of doors, windows and any other item are approximate and no responsibility is taken for any error, omission or mistatement. This plan is for illustrative purposes and only should be used as such.  
 Plan produced using PlanUp.



**Directions**

106 High Street, Billericay, Essex, CM12 9BY  
 01277 65 65 63

**Viewings**

Viewings by arrangement only. Call 01277 65 65 63 to make an appointment.

**Council Tax Band**

B

Energy Efficiency Rating		Current	Potential
Very energy efficient - lower running costs			
(92 plus) A			
(81-91) B			
(69-80) C			
(55-68) D		68	80
(39-54) E			
(21-38) F			
(1-20) G			
Not energy efficient - higher running costs			
England & Wales		EU Directive 2002/91/EC	

info@parabar.co.uk  
 www.parabar.co.uk